

DEVELOPMENTS OF REGIONAL IMPACT

The DeLisi Fitzgerald team has significant experience with the Developments of Regional Impact (DRI) procedures and application process. The firm has been involved with a series of DRI's in several counties and, in collaboration with engineers, environmentalists, landscape architects, has permitted projects that are economically viable while planning for necessary infrastructure.

SAMPLE PROJECTS

South LaBelle Village, LaBelle, FL

The South LaBelle Village DRI is a 1,018 acre mixed use development that is the first DRI permitted in Hendry County in 30 years and part of an overall 5,000 acre project. The development is a natural extension of the City of LaBelle's urban area and includes 2,500 units with a mixed use town center connected to an urban educational campus in conjunction with Edison Community College. The DRI included an amendment to the City's comprehensive plan and rezoning of the property.

Additional projects include:

Miromar Lakes DRI/NOPC

Orlando International Airport DRI/NOPC

Millennium Commerce Park DRI

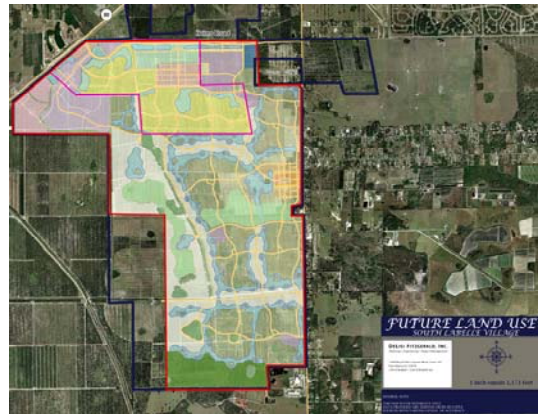
The Great Loop of Punta Gorda DRI

Charlotte County Airport DRI Vacate

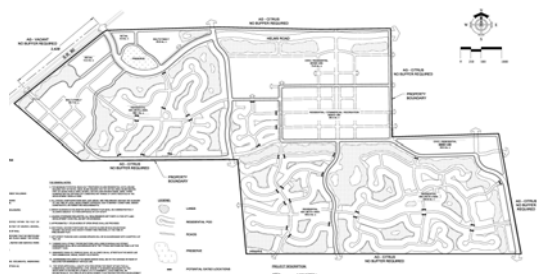
Bonita Bay DRI/NOPC

North Point DRI (Completed with another firm)

Gateway DRI/NOPC (Worthington Village and Commerce Park, completed with another firm)



South LaBelle Village DRI Master Concept Plan



South LaBelle Village PUD Plan